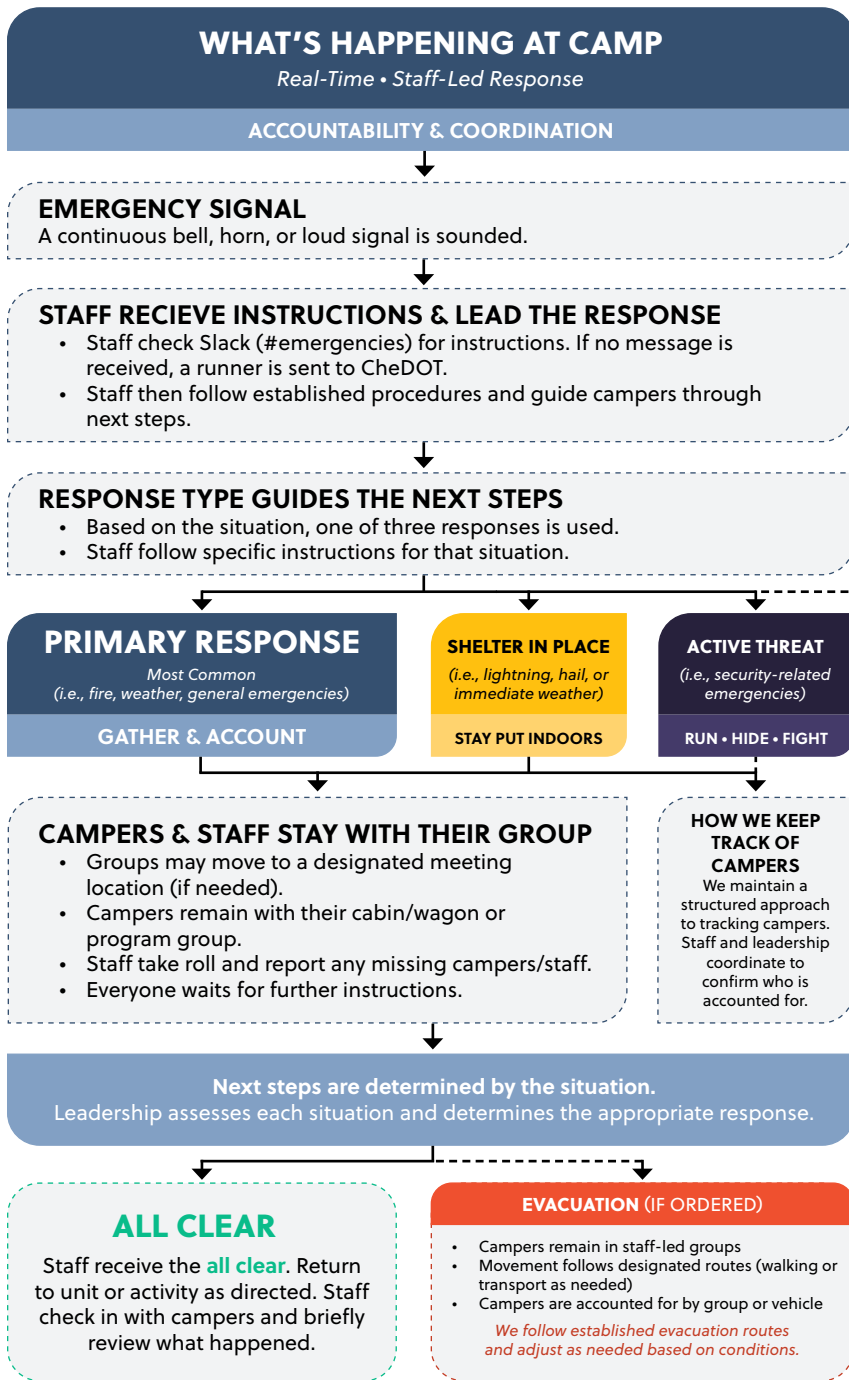


WHAT HAPPENS DURING AN EMERGENCY?



OUR APPROACH TO SAFETY, ACCOUNTABILITY, AND COMMUNICATION



WHAT THIS MEANS FOR YOU

Thoughtful • Deliberate Communication

UPDATES & DIRECT CONTACT

COMMUNICATION DURING A EMERGENCY RESPONSE
During any situation, we are focused on:

- Prioritizing the safety and well-being of every camper and staff member
- Coordinating with staff and, if needed, local authorities
- Making informed, thoughtful decisions

Because of this, communication may not be immediate.

HOW WE WILL CONTACT YOU & WHEN YOU WILL HEAR FROM US
We will communicate with families using:

- Direct phone calls for individual camper needs (medical, behavioral, emotional)
- Email and/or text alerts for group-wide updates
- Cheley app notifications and/or authorized social media accounts
- Dedicated webpages or blog updates during larger or ongoing situations

If an emergency or unexpected incident occurs, our staff will endeavor to contact families as deliberately and thoughtfully as possible.

WHAT YOU CAN EXPECT
If your camper is directly impacted, you will hear from us personally.

- You will receive updates via text/email if there is a broader situation affecting camp.
- We will continue communication until the situation is resolved.

WHAT WE ASK FROM FAMILIES

- Please do not call camp during an active emergency as phone lines must remain open.
- Monitor your email and texts for updates.

Thank you for trusting us with your camper.

HOW WE PREPARE & RESPOND EARLY

PROACTIVE • INFORMED • EXPERIENCED

<p>WEATHER MONITORING & ALERTS Real-time monitoring using forecasting tools, alerts, and field communication.</p>	<p>AWARENESS, ACCESS & COMMUNICATION Situations are identified through staff observation, communication systems, and controlled access to camp.</p>	<p>PLANNING, TRAINING & PREPARATION Procedures are reviewed yearly, practiced, and reinforced through staff training and drills.</p>	<p>HEALTH & ACCESS TO CARE On-site health centers with trained staff and access to emergency care just 6 miles from camp.</p>	<p>EXPERIENCE & RISK MANAGEMENT Over 100 years of experience in risk management, decision-making, and emergency preparedness.</p>
--	--	---	--	--

QUESTIONS? WE'RE HERE TO HELP.
970-586-4244
office@cheley.com



This overview highlights key elements of our emergency response. Our full procedures are comprehensive, reviewed, and updated yearly.